

BDM series explosion-proof cable clamp sealing joint

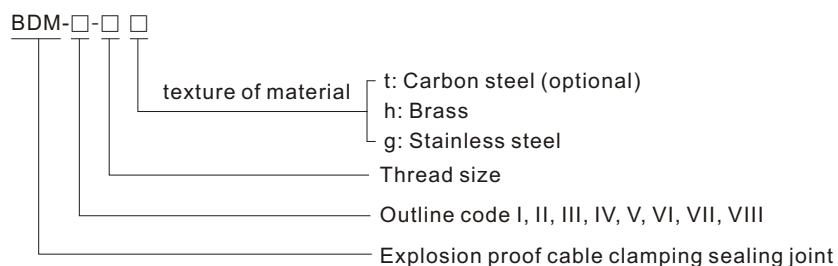
Scope of application

1. It is applicable to the places in Zone 1 and Zone 2 of explosive gas environment;
2. It is applicable to the places in Zone 21 and 22 of combustible dust environment;
3. Suitable for IIA, IIB and IIC explosive gas environment;
4. Applicable to T1-T6 temperature group;
5. It is widely used for clamping and sealing cables in dangerous environment places such as petroleum exploitation, oil refining, chemical industry, military industry, etc.

Pipe fitting



Model meaning



Executive standards

GB/T3836.1、GB/T3836.2、GB/T3836.3、GB/T3836.31、IEC60079-0、IEC60079-1、IEC60079-7、IEC60079-31、EN60079-0、EN60079-1、EN60079-7、EN60079-31。

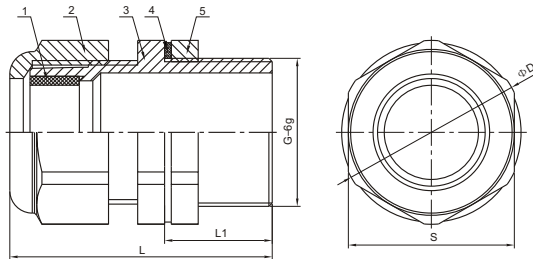
Feature of product

1. It is made of high-quality carbon steel, and the material can be stainless steel or brass according to user requirements;
2. Thread specifications can be customized according to user requirements or different specifications at both ends.

Model Selection Table

BDM - Type I parameters and profiles

The single-layer sealed mechanical cable clamping device is pressed with engineering plastics and has strong anti-corrosion and waterproof performance. It is suitable for the introduction of unarmoured cables in the increased safety enclosure.



1. Sealing ring
2. Compression nut
3. Connector body
4. Flat gasket
5. Lock nut

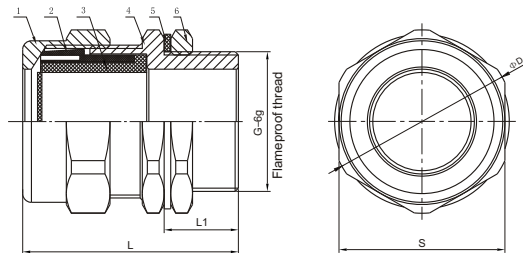
Pipe fitting

Specifications(D)			Applicable cable diameter Sealing range (Φ)	Thread length	Length (L)	Opposite side/ maximum outer diameter S(Φ)	Explosion proof sign	Degree of protection
Imperial	American	Metric						
G 1/2	NPT 1/2	M20x1.5	8~12	10	37	24/27	Ex eb II C Gb Ex tb III C T80 C Db	IP66
G 3/4	NPT 3/4	M25x1.5	11~15	13	43	28/31		
G 1	NPT 1	M32x1.5	18~20	24	58	37/41		
G 1 1/4	NPT 1 1/4	M40x1.5	24~28	21	64	48/52		
G 1 1/2	NPT 1 1/2	M50x1.5	31~37	21	66	56/63		
G 2	NPT 2	M63x1.5	37~41	20	72	65/73		

Note: 1. The product is made of engineering plastics; 2. Other thread specifications can be customized.

BDM - II type parameters and shape

It is made of high-quality carbon steel, brass or stainless steel. The mechanical cable clamping device has strong waterproof performance and is suitable for the introduction of unarmoured cables in the increased safety enclosure

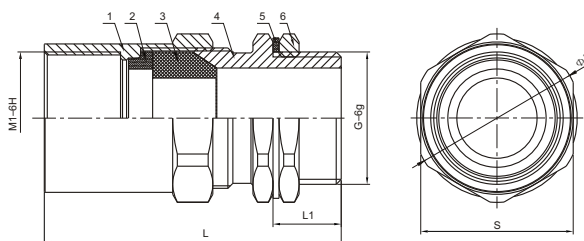


1. Compression nut
2. Clamping claw
3. Sealing ring
4. Connector body
5. Flat gasket
6. Lock nut

Specifications(D)			Applicable cable diameter Sealing range (Φ)	Thread length	Length (L)	Opposite side/ maximum outer diameter S(Φ)	Explosion proof sign	Degree of protection
Imperial	American	Metric						
G ½	NPT 1/2	M20x1.5	8~12	15	43	27/30	Ex eb II C Gb Ex tb III C T80 C Db	IP66
G 3/4	NPT 3/4	M25x1.5	12~17	15	45	32/35		
G 1	NPT 1	M32x1.5	15~22	17	49	38/42		
G 1 1/4	NPT 1 1/4	M40x1.5	20~28	17	53	45/50		
G 1 1/2	NPT 1 1/2	M50x1.5	28~36	17	58	55/61		
G 2	NPT 2	M63x1.5	35~48	19	64	68/74		
G 2 1/2	NPT 2 1/2	M75x1.5	45~56	24	73	85/94		
G 3	NPT 3	M90x1.5	55~73	26	74	100/110		
G 4	NPT 4	M115x2	68~91	28	81	125/135		

BDM - III parameters and shape

It is made of high-quality carbon steel, brass or stainless steel. The displacement type cable clamping device has strong waterproof performance. It has a single-layer sealing structure. The inlet end has a threaded connection port for the introduction of non armored cables.

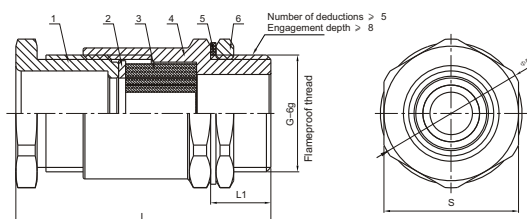


1. Compression nut
2. Washer
3. Sealing ring
4. Connector body
5. Flat gasket
6. Lock nut

Specifications(D)			Applicable cable diameter Sealing range (Φ)	Thread length	Length (L)	Opposite side/ maximum outer diameter S(Φ)	Specification of internal thread at tail end (D2)			Explosion proof sign	Degree of protection
Imperial	American	Metric					Imperial	American	Metric		
G 1/2	NPT 1/2	M20x1.5	5~10	15	68	27/30	G 1/2	NPT 1/2	M20x1.5	Ex eb II C Gb Ex tb III C T80°C Db	IP66
G 3/4	NPT 3/4	M25x1.5	9~15	15	70	34/37	G 3/4	NPT 3/4	M25x1.5		
G 1	NPT 1	M32x1.5	14~20	17	74	38/42	G 1	NPT 1	M32x1.5		
G 1 1/4	NPT 1 1/4	M40x1.5	19~25	17	74	48/54	G 1 1/4	NPT 1 1/4	M40x1.5		
G 1 1/2S	NPT 1 1/2S	M50x1.5S	26~32	17	76	55/61	G 1 1/2	NPT 1 1/2	M50x1.5		
G 1 1/2	NPT 1 1/2	M50x1.5	35~39	17	76	55/61	G 1 1/2	NPT 1 1/2	M50x1.5		
G 2	NPT 2	M63x1.5	39~45	19	79	68/74	G 2	NPT 2	M63x1.5		
G 2 1/2S	NPT 2 1/2S	M75x1.5S	36~45	24	92	85/94	G 2 1/2	NPT 2 1/2	M75x1.5		
G 2 1/2	NPT 2 1/2	M75x1.5	45~56	24	92	85/94	G 2 1/2	NPT 2 1/2	M75x1.5		
G 3S	NPT 3S	M90x1.5S	51~65	26	97	100/110	G 3	NPT 3	M90x1.5		
G 3	NPT 3	M90x1.5	64~72	26	97	100/110	G 3	NPT 3	M90x1.5		
G 4	NPT 4	M115x2	74~84	28	103	125/135	G 4	NPT 4	M115x2		

BDM - IV parameters and shape

Made of high-quality carbon steel, brass or stainless steel, the mechanical cable clamping device has strong waterproof performance and is suitable for the introduction of non armored cables



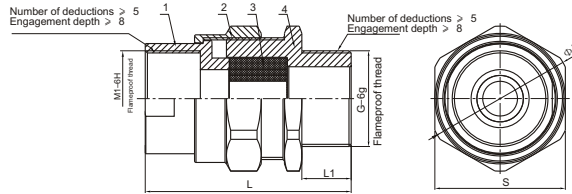
1. Compression nut
2. Washer
3. Sealing ring
4. Connector body
5. Flat gasket
6. Lock nut

Specifications(D)			Applicable cable diameter Sealing range (Φ)	Thread length	Length (L)	Opposite side/ maximum outer diameter S(Φ)	Explosion proof sign	Degree of protection
Imperial	American	Metric						
G 1/2	NPT 1/2	M20x1.5	8~10	15	63	27/30	Ex db II C Gb Ex eb II C Gb Ex tb III C T80°C Db	IP66
G 3/4	NPT 3/4	M25x1.5	9~14	15	63	32/35		
G 1	NPT 1	M32x1.5	12~20	17	72	38/42		
G 1 1/4	NPT 1 1/4	M40x1.5	14~23	17	78	48/54		
G 1 1/2	NPT 1 1/2	M50x1.5	22~28	17	79	55/61		
G 2	NPT 2	M63x1.5	25~37	19	85	68/74		
G 2 1/2	NPT 2 1/2	M75x1.5	33~50	24	107	85/94		
G 3	NPT 3	M90x1.5	47~63	26	110	98/106		
G 4	NPT 4	M115x2	62~81	28	122	125/135		

Explosion proof pipe fittings

BDM - V type parameters and shape

It is made of high-quality carbon steel, brass or stainless steel. The mechanical cable clamping device has strong waterproof performance. The inlet end has a threaded connection port for the introduction of unarmoured cables.

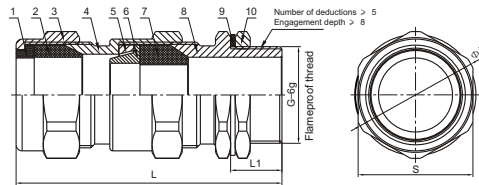


1. Threaded joint
2. Compression nut
3. Sealing ring
4. Connector body

Specifications(D)			Applicable cable diameter Sealing range(Φ)	Thread length	Length (L)	Opposite side/ maximum outer diameter S(Φ)	Explosion proof sign	Degree of protection
Imperial	American	Metric						
G 1/2	NPT1/2	M20x1.5	8~10	15	65	34/37	Ex db II C Gb Ex eb II C Gb Ex tb III C T80°C Db	IP66
G 3/4	NPT 3/4	M25x1.5	9~14	15	65	38/42		
G 1	NPT 1	M32x1.5	12~20	17	71	45/50		
G 1 1/4	NPT 1 1/4	M40x1.5	14~23	17	77	55/61		
G 1 1/2	NPT 1 1/2	M50x1.5	22~28	17	78	65/72		
G 2	NPT 2	M63x1.5	25~37	19	84	81/86		
G 2 1/2	NPT 2 1/2	M75x1.5	33~50	24	105	98/106		
G 3	NPT 3	M90x1.5	47~63	26	111	113/119		
G 4	NPT 4	M115x2	62~81	28	123	136/140		

BDM - VI type parameters and shape

It is made of high-quality carbon steel, brass or stainless steel. The displacement cable clamping device has strong waterproof performance. It has a double-layer sealing structure and is suitable for the introduction of armored cables.



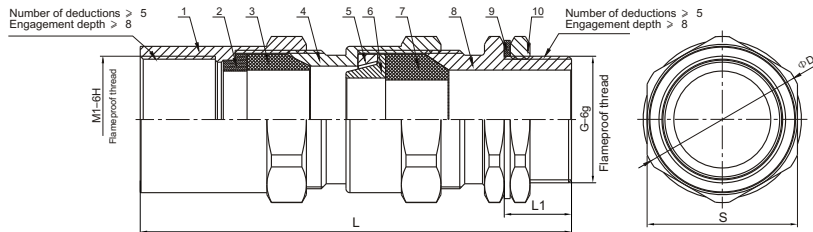
1. Washer
2. Outer sealing ring
3. Compression nut
4. Intermediate connector
5. Press the cover ring
6. Cone sleeve
7. Inner sealing ring
8. Connector body
9. Sealing flat gasket
10. Lock nut

Specifications(D)			Outer diameter of armored cable (outgoing line)	Cable outer diameter (incoming line)	Thread length	Length (L)	Opposite side/ maximum outer diameter S(Φ)	Explosion proof sign	Degree of protection
Imperial	American	Metric							
G 1/2	NPT1/2	M20x1.5	5~10	9~14	15	85	27/30	Ex db II C Gb Ex eb II C Gb Ex tb III C T80°C Db	IP66
G 3/4S	NPT 3/4S	M25x1.5S	5~10	9~14	15	87	34/37		
G 3/4	NPT 3/4	M25x1.5	9~15	14~19	15	87	34/37		
G 1S	NPT 1S	M32x1.5S	9~15	14~20	17	88	38/42		
G 1	NPT 1	M32x1.5	14~20	19~24	17	88	28/42		
G 1 1/4	NPT 1 1/4	M40x1.5	19~25	25~30	17	88	48/54		
G 1 1/2S	NPT 1 1/2S	M50x1.5S	20~26	31~36	17	91	55/61		
G 1 1/2	NPT 1 1/2	M50x1.5	26~32	35~39	17	91	55/61		
G 2S	NPT 2S	M63x1.5S	27~33	39~45	19	94	68/74		
G 2	NPT 2	M63x1.5	39~45	42~50	19	94	68/74		
G 2 1/2S	NPT 2 1/2S	M75x1.5S	36~45	48~56	24	109	85/94		
G 2 1/2	NPT 2 1/2	M75x1.5	48~56	56~65	24	109	85/94		
G 3S	NPT 3S	M90x1.5S	35~50	51~65	26	112	100/110		
G 3	NPT 3	M90x1.5	51~65	64~75	26	112	100/110		
G 4S	NPT 4S	M115x2S	55~65	74~84	28	117	125/135		
G 4	NPT 4	M115x2	74~84	87~98	28	117	125/135		

BDM - VII type parameters and shape

It is made of high-quality carbon steel, brass or stainless steel. The displacement type cable clamping device has strong waterproof performance. It has a double-layer sealing structure. The inlet end has a threaded connection port, which is suitable for the introduction of armored cables.

Pipe fitting



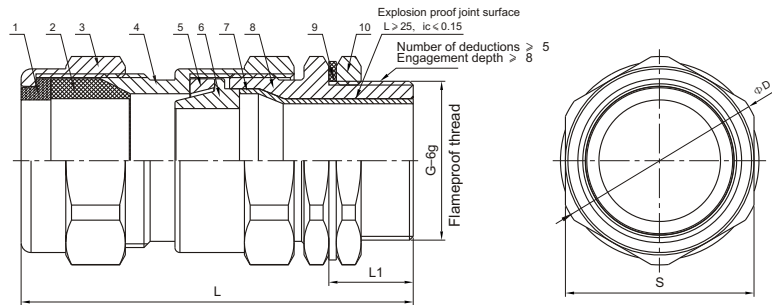
1. Compression nut 2. Washer 3. Outer sealing ring 4. Intermediate connector 5. Press the cover ring
6. Cone sleeve 7. Inner sealing ring 8. Connector body 9. Sealing flat gasket 10. Lock nut

Specifications(D)			Outer diameter of armored cable (outgoing line)	Cable outer diameter (incoming line)	Thread length	Length (L)	Opposite side/ maximum outer diameter S(Φ)	Tail end thread specification (D2)			Explosion proof sign	Degree of protection
Imperial	American	Metric						Imperial	American	Metric		
G 1/2	NPT 1/2	M20x1.5	5~10	9~14	15	103	27/30	G 1/2	NPT 1/2	M20x1.5	Ex db II C Gb Ex eb II C Gb Ex tb III C T80 C Db	IP66
G 3/4S	NPT 3/4S	M25x1.5S	5~10	9~14	15	105	34/37	G 3/4	NPT 3/4	M25x1.5		
G 3/4	NPT 3/4	M25x1.5	9~15	14~19	15	105	34/37	G 3/4	NPT 3/4	M25x1.5		
G 1S	NPT 1S	M32x1.5S	9~15	14~20	17	109	38/42	G 1S	NPT 1S	M32x1.5		
G 1	NPT 1	M32x1.5	14~20	19~24	17	109	28/42	G 1	NPT 1	M32x1.5		
G 1 1/4	NPT 1 1/4	M40x1.5	19~25	25~30	17	110	48/54	G 1 1/4	NPT 1 1/4	M40x1.5		
G 1 1/2S	NPT 1 1/2S	M50x1.5S	20~26	31~36	17	113	55/61	G 1 1/2	NPT 1 1/2	M50x1.5		
G 1 1/2	NPT 1 1/2	M50x1.5	26~32	35~39	17	113	55/61	G 1 1/2	NPT 1 1/2	M50x1.5		
G 2S	NPT 2S	M63x1.5S	27~33	39~45	19	116	68/74	G 2	NPT 2	M63x1.5		
G 2	NPT 2	M63x1.5	39~45	42~50	19	116	68/74	G 2	NPT 2	M63x1.5		
G 2 1/2S	NPT 2 1/2S	M75x1.5S	36~45	48~56	24	136	85/94	G 2 1/2	NPT 2 1/2	M75x1.5		
G 2 1/2	NPT 2 1/2	M75x1.5	48~56	56~65	24	136	85/94	G 2 1/2	NPT 2 1/2	M75x1.5		
G 3S	NPT 3S	M90x1.5S	35~50	51~65	26	141	100/110	G 3	NPT 3	M90x1.5		
G 3	NPT 3	M90x1.5	51~65	64~75	26	141	100/110	G 3	NPT 3	M90x1.5		
G 4S	NPT 4S	M115x2S	55~65	74~84	28	148	125/135	G 4	NPT 4	M115x2		
G 4	NPT 4	M115x2	74~84	87~98	28	148	125/135	G 4	NPT 4	M115x2		

Explosion proof pipe fittings

BDM - VIII - A type parameters and shape

It is made of high-quality carbon steel, brass or stainless steel. The displacement cable clamping device has strong waterproof performance. The stuffing box has a single-layer sealing structure and is suitable for the introduction of armored cables.



1. Washer 2. Sealing ring 3. Compression nut 4. Intermediate connector 5. Press the cover ring
6. Cone sleeve 7. Explosion proof bushing 8. Connector body 9. Sealing flat gasket 10. Lock nut

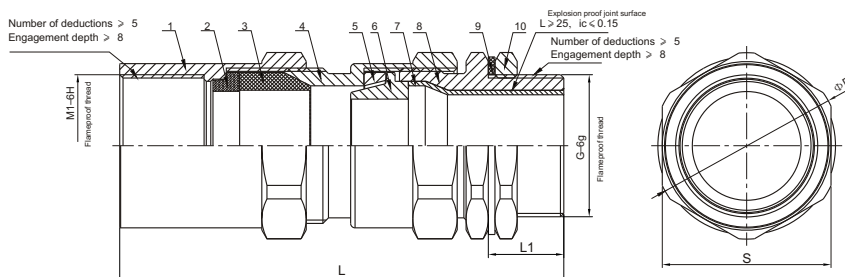
Pipe fitting

Specifications(D)			Maximum outer diameter of cable (outgoing line)	Cable outer diameter (incoming line)	Thread length	Length (L)	Opposite side/ maximum outer diameter S(Φ)	Explosion proof sign	Degree of protection
Imperial	American	Metric							
G 1/2	NPT 1/2	M20x1.5	12	9~14	15	79	27/30	Ex db II C Gb Ex eb II C Gb Ex tb III C T80 C Db	IP66
G 3/4S	NPT 3/4S	M25x1.5S	18	9~14	15	80	34/37		
G 3/4	NPT 3/4	M25x1.5	18	14~19	15	80	34/37		
G 1S	NPT 1S	M32x1.5S	21	14~20	17	81	38/42		
G 1	NPT 1	M32x1.5	21	19~24	17	81	28/42		
G 1 1/4	NPT 1 1/4	M40x1.5	27	25~30	17	81	48/54		
G 1 1/2S	NPT 1 1/2S	M50x1.5S	37	31~36	17	84	55/61		
G 1 1/2	NPT 1 1/2	M50x1.5	37	35~39	17	84	55/61		
G 2S	NPT 2S	M63x1.5S	46	39~45	19	87	68/74		
G 2	NPT 2	M63x1.5	46	42~50	19	87	68/74		
G 2 1/2S	NPT 2 1/2S	M75x1.5S	57	48~56	24	102	85/94		
G 2 1/2	NPT 2 1/2	M75x1.5	57	56~65	24	102	85/94		
G 3S	NPT 3S	M90x1.5S	72	51~65	26	105	100/110		
G 3	NPT 3	M90x1.5	72	64~75	26	105	100/110		
G 4S	NPT 4S	M115x2S	90	74~84	28	110	125/135		
G 4	NPT 4	M115x2	90	87~98	28	110	125/135		

BDM - VIII - B type parameters and shape

It is made of high-quality carbon steel, brass or stainless steel. The displacement cable clamping device has strong waterproof performance. The stuffing box has a single-layer sealing structure. The inlet end has a threaded connection port, which is suitable for the introduction of armored cables.

Pipe fitting



1. Compression nut 2. Washer 3. Sealing ring 4. Intermediate connector 5. Press the cover ring
6. Cone sleeve 7. Explosion proof bushing 8. Connector body 9. Sealing flat gasket 10. Lock nut

Specifications(D)			Maximum outer diameter of cable (outgoing line)	Cable outer diameter (incoming line)	Thread length	Length (L)	Opposite side/ maximum outer diameter S(Φ)	Tail end thread specification (D2)			Explosion proof sign	Degree of protection
Imperial	American	Metric						Imperial	American	Metric		
G 1/2	NPT 1/2	M20x1.5	12	9~14	15	97	27/30	G1/2	NPT1/2	M20x1.5	Ex db II C Gb Ex eb II C Gb Ex tb III C T80°C Db	IP66
G 3/4S	NPT 3/4S	M25x1.5S	18	9~14	15	98	34/37	G 3/4	NPT 3/4	M25x1.5		
G 3/4	NPT 3/4	M25x1.5	18	14~19	15	98	34/37	G 3/4	NPT 3/4	M25x1.5		
G 1S	NPT 1S	M32x1.5S	21	14~20	17	102	38/42	G 1S	NPT 1S	M32x1.5		
G 1	NPT 1	M32x1.5	21	19~24	17	102	28/42	G 1	NPT 1	M32x1.5		
G 1 1/4	NPT 1 1/4	M40x1.5	27	25~30	17	103	48/54	G 1 1/4	NPT 1 1/4	M40x1.5		
G 1 1/2S	NPT 1 1/2S	M50x1.5S	37	31~36	17	106	55/61	G 1 1/2	NPT 1 1/2	M50x1.5		
G 1 1/2	NPT 1 1/2	M50x1.5	37	35~39	17	106	55/61	G 1 1/2	NPT 1 1/2	M50x1.5		
G 2S	NPT 2S	M63x1.5S	46	39~45	19	109	68/74	G 2	NPT 2	M63x1.5		
G 2	NPT 2	M63x1.5	46	42~50	19	109	68/74	G 2	NPT 2	M63x1.5		
G 2 1/2S	NPT 2 1/2S	M75x1.5S	57	48~56	24	129	85/94	G 2 1/2	NPT 2 1/2	M75x1.5		
G 2 1/2	NPT 2 1/2	M75x1.5	57	56~65	24	129	85/94	G 2 1/2	NPT 2 1/2	M75x1.5		
G 3S	NPT 3S	M90x1.5S	72	51~65	26	134	100/110	G 3	NPT 3	M90x1.5		
G 3	NPT 3	M90x1.5	72	64~75	26	134	100/110	G 3	NPT 3	M90x1.5		
G 4S	NPT 4S	M115x2S	90	74~84	28	139	125/135	G 4	NPT 4	M115x2		
G 4	NPT 4	M115x2	90	87~98	28	139	125/135	G 4	NPT 4	M115x2		