

## BHJ series explosion-proof movable joint

### Scope of application

1. It is applicable to the places in Zone 1 and Zone 2 of explosive gas environment;
2. It is applicable to the places in Zone 21 and 22 of combustible dust environment;
3. Suitable for IIA, IIB and IIC explosive gas environment;
4. Applicable to T1-T6 temperature group;
5. It is widely used for clamping and sealing cables in dangerous environment places such as petroleum exploitation, oil refining, chemical industry, military industry, etc.

Pipe fitting



A



B



C

### Feature of product

1. It is made of high-quality carbon steel or stainless steel, and the material can be stainless steel according to user requirements;
2. Thread specifications can be customized according to user requirements, such as NPT, metric thread, etc.

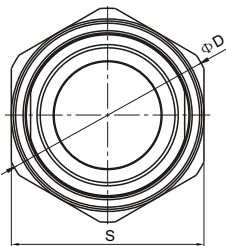
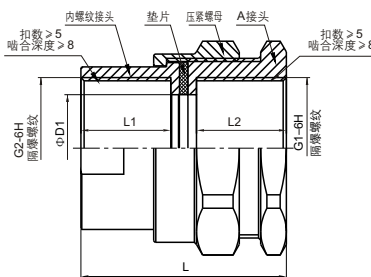
### Technical parameter

Explosion proof sign: Ex db II C Gb / Ex eb II C Gb / Ex tb III C T80°C Db

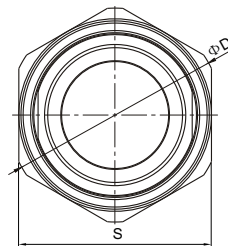
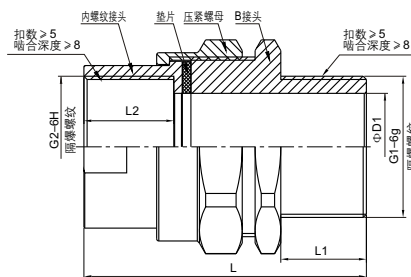
Thread specification: "G1/2-G4", "NPT1/2-NPT4", "M20-M110" Various sizes of threads for users to choose;

Protection grade: IP66

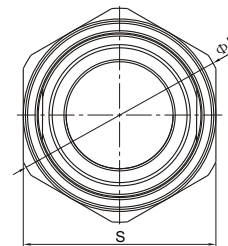
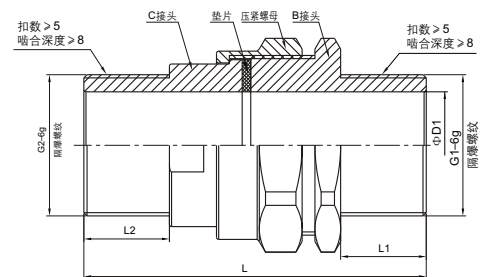
### Overall dimensions



A



B



C

## Model Selection Table

| Model                             | Thread size |           |         | Total length | Thread length L1 (External thread) | Thread length L2 (internal thread) | Opposite side S | Maximum outside diameter | Inner bore (Φ) |
|-----------------------------------|-------------|-----------|---------|--------------|------------------------------------|------------------------------------|-----------------|--------------------------|----------------|
|                                   | Imperial    | American  | Metric  |              |                                    |                                    |                 |                          |                |
| Type A<br>double<br>inner         | G 1/2       | NPT 1/2   | M20x1.5 | 42           | -                                  | 18                                 | 34              | 37                       | 15             |
|                                   | G 3/4       | NPT 3/4   | M25x1.5 | 42           | -                                  | 18                                 | 38              | 42                       | 20             |
|                                   | G 1         | NPT 1     | M32x1.5 | 48           | -                                  | 21                                 | 45              | 50                       | 25             |
|                                   | G 1 1/4     | NPT 1 1/4 | M40x1.5 | 48           | -                                  | 21                                 | 55              | 61                       | 32             |
|                                   | G 1 1/2     | NPT 1 1/2 | M50x1.5 | 49           | -                                  | 21                                 | 65              | 72                       | 38             |
|                                   | G 2         | NPT 2     | M63x1.5 | 52           | -                                  | 23                                 | 81              | 86                       | 48             |
|                                   | G 2 1/2     | NPT 2 1/2 | M75x1.5 | 59           | -                                  | 26                                 | 98              | 106                      | 62             |
|                                   | G 3         | NPT 3     | M90x1.5 | 67           | -                                  | 30                                 | 113             | 119                      | 75             |
|                                   | G 4         | NPT 4     | M115x2  | 71           | -                                  | 32                                 | 136             | 140                      | 100            |
| Type B<br>domestic<br>and foreign | G 1/2       | NPT 1/2   | M20x1.5 | 56           | 17                                 | 18                                 | 34              | 37                       | 15             |
|                                   | G 3/4       | NPT 3/4   | M25x1.5 | 59           | 17                                 | 18                                 | 38              | 42                       | 20             |
|                                   | G 1         | NPT 1     | M32x1.5 | 66           | 20                                 | 21                                 | 45              | 50                       | 25             |
|                                   | G 1 1/4     | NPT 1 1/4 | M40x1.5 | 66           | 20                                 | 21                                 | 55              | 61                       | 32             |
|                                   | G 1 1/2     | NPT 1 1/2 | M50x1.5 | 67           | 20                                 | 21                                 | 65              | 72                       | 38             |
|                                   | G 2         | NPT 2     | M63x1.5 | 72           | 22                                 | 23                                 | 81              | 86                       | 48             |
|                                   | G 2 1/2     | NPT 2 1/2 | M75x1.5 | 83           | 25                                 | 26                                 | 98              | 106                      | 62             |
|                                   | G 3         | NPT 3     | M90x1.5 | 93           | 28                                 | 30                                 | 113             | 119                      | 75             |
|                                   | G 4         | NPT 4     | M115x2  | 99           | 30                                 | 32                                 | 136             | 140                      | 100            |
| Type C<br>Double<br>outer         | G 1/2       | NPT 1/2   | M20x1.5 | 69           | 17                                 | -                                  | 34              | 37                       | 15             |
|                                   | G 3/4       | NPT 3/4   | M25x1.5 | 72           | 17                                 | -                                  | 38              | 42                       | 20             |
|                                   | G 1         | NPT 1     | M32x1.5 | 80           | 20                                 | -                                  | 45              | 50                       | 25             |
|                                   | G 1 1/4     | NPT 1 1/4 | M40x1.5 | 80           | 20                                 | -                                  | 55              | 61                       | 32             |
|                                   | G 1 1/2     | NPT 1 1/2 | M50x1.5 | 81           | 20                                 | -                                  | 65              | 72                       | 38             |
|                                   | G 2         | NPT 2     | M63x1.5 | 87           | 22                                 | -                                  | 81              | 86                       | 48             |
|                                   | G 2 1/2     | NPT 2 1/2 | M75x1.5 | 99           | 25                                 | -                                  | 98              | 106                      | 62             |
|                                   | G 3         | NPT 3     | M90x1.5 | 109          | 28                                 | -                                  | 113             | 119                      | 75             |
|                                   | G 4         | NPT 4     | M115x2  | 115          | 30                                 | -                                  | 136             | 140                      | 100            |

Pipe fitting